

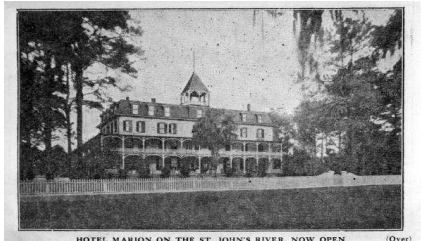
Welcome to Brandon Place at Moosehaven!

There is a lot of excitement both on and off the Moosehaven campus about what is happening daily on the campus. Residents have enjoyed watching the demolition of several residence halls, the picnic grounds, and some road pavement. The community has also been involved! City and county Swat teams, along with firefighters, have used the vacated resident halls for training purposes prior to their demolition.

In the meantime, floor plans and the site plan are in their final versions on the drawing board and will be available in late February. The Entrance fees will also be coming in late February as well.

Brandon Place Reflects Early History of Moosehaven

Reminiscent of the original Brandon Hall



The Hotel Marion/Brandon Hall

In 1922, Rodney Brandon purchased a 65-room hotel in Orange Park, Florida to serve as the first resident hall on property he named, Moosehaven. The hotel, originally called Sparhawk, was built in 1886 to attract northern visitors, but burned down in 1891. It was quickly rebuilt and renamed the Parkview Hotel. Later it was purchased by Charles Albert Brown, Jr., who renamed the hotel for his mother, Marion. After Brandon's purchase, the first residents appropriately named it, Brandon Hall.

Brandon Hall had wide porches and high ceilings, typical of a Florida building. A Mansard roof topped the fourth floor. The architectural style of Brandon Place, as well as the future Parkview Apartments and Riverview Homes (duplexes) will reflect many of the small details found in Brandon Hall, a look that is uniquely Florida, yet with its own Moose history.

Frequently Asked Questions

What is the Difference Between the Current Admission and The Entrance Fee Admission?

Admission to Moosehaven has always been an Asset Surrender program. Residents turn over all of the assets (homes, cars, bank accounts, etc) to Moosehaven, Inc. in order for Moosehaven to provide community housing, meals, daily needs, activities, transportation, and health care.

Under the Entrance Fee Program, residents pay a one-time Entrance Fee and an on-going Monthly Service fee for the apartment or duplex of their choice. Residents keep their assets and independent lifestyle while knowing they will receive health care if and when needed at Moosehaven.

Under the Entrance Fee Program, do I own my home?

Your Entrance Fee establishes a contractual lease agreement between you and Moosehaven, Inc. to provide independent residential living services, amenities, and health care options. Under the two types of Entrance Fees available at Moosehaven, residents can choose different refund options for estate preservation. However, Residents will be able to furnish their homes according to personal tastes.